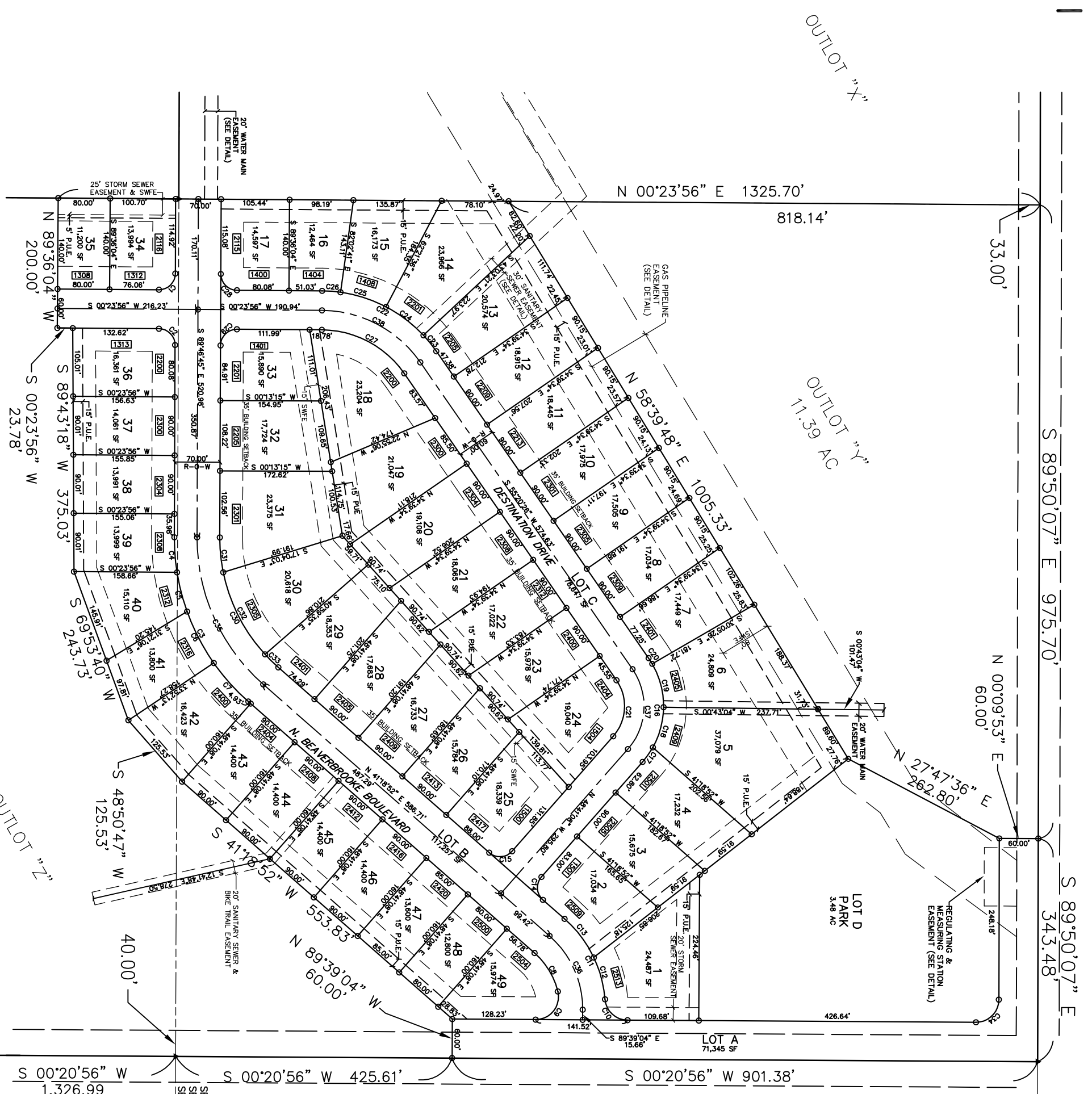
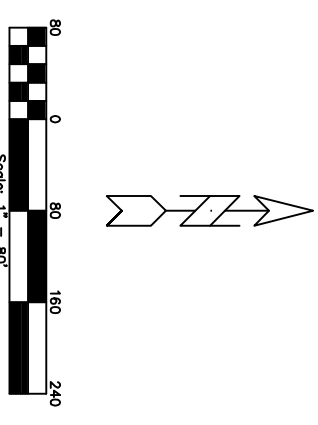


FINAL PLAT
NORTH POINTE PLAT I

NUMBER	DELTA ANGLE	CHORD DIRECTION	RADIUS	ARC LENGTH	CHORD LENGTH
C1	90°01'41"	N 44°17'24" W	25.00	38.25	35.41
C2	89°49'42"	N 45°18'26" W	25.00	38.19	35.30
C3	89°44'42"	N 46°19'28" W	25.00	38.13	35.20
C4	89°39'42"	N 47°20'30" W	25.00	38.07	35.10
C5	89°34'42"	N 48°21'32" W	25.00	38.01	35.00
C6	89°29'42"	N 49°22'34" W	25.00	37.95	34.90
C7	89°24'42"	N 50°23'36" W	25.00	37.89	34.80
C8	89°19'42"	N 51°24'38" W	25.00	37.83	34.70
C9	89°14'42"	N 52°25'40" W	25.00	37.77	34.60
C10	89°09'42"	N 53°26'42" W	25.00	37.71	34.50
C11	89°04'42"	N 54°27'44" W	25.00	37.65	34.40
C12	88°59'42"	N 55°28'46" W	25.00	37.59	34.30
C13	88°54'42"	N 56°29'48" W	25.00	37.53	34.20
C14	88°49'42"	N 57°30'50" W	25.00	37.47	34.10
C15	88°44'42"	N 58°31'52" W	25.00	37.41	34.00
C16	88°39'42"	N 59°32'54" W	25.00	37.35	33.90
C17	88°34'42"	N 60°33'56" W	25.00	37.29	33.80
C18	88°29'42"	N 61°34'58" W	25.00	37.23	33.70
C19	88°24'42"	N 62°35'60" W	25.00	37.17	33.60
C20	88°19'42"	N 63°36'02" W	25.00	37.11	33.50
C21	88°14'42"	N 64°37'04" W	25.00	37.05	33.40
C22	88°09'42"	N 65°38'06" W	25.00	36.99	33.30
C23	88°04'42"	N 66°39'08" W	25.00	36.93	33.20
C24	87°59'42"	N 67°40'10" W	25.00	36.87	33.10
C25	87°54'42"	N 68°41'12" W	25.00	36.81	33.00
C26	87°49'42"	N 69°42'14" W	25.00	36.75	32.90
C27	87°44'42"	N 70°43'16" W	25.00	36.69	32.80
C28	87°39'42"	N 71°44'18" W	25.00	36.63	32.70
C29	87°34'42"	N 72°45'20" W	25.00	36.57	32.60
C30	87°29'42"	N 73°46'22" W	25.00	36.51	32.50
C31	87°24'42"	N 74°47'24" W	25.00	36.45	32.40
C32	87°19'42"	N 75°48'26" W	25.00	36.39	32.30
C33	87°14'42"	N 76°49'28" W	25.00	36.33	32.20
C34	87°09'42"	N 77°50'30" W	25.00	36.27	32.10
C35	87°04'42"	N 78°51'32" W	25.00	36.21	32.00
C36	86°59'42"	N 79°52'34" W	25.00	36.15	31.90
C37	86°54'42"	N 80°53'36" W	25.00	36.09	31.80
C38	86°49'42"	N 81°54'38" W	25.00	36.03	31.70



FINAL PLAT - NORTH POINTE PLAT I

NO.	REVISION	DATE	BY	FOR:	LOCATION:	SCALE:	DESIGNED BY:	DRAWN BY:
						1" = 80'	DFR	KMS
						DWG: 3117fp1.dwg	CHECKED BY: DFR	DATE: 10/01/04
						FIELD BOOK:	SHEET 2 OF 2	FILE NO.: 3117.00

ERG
Engineering Resource Group, Inc.
Engineers and Surveyors
2413 GRAND AVENUE
DES MOINES, IOWA 50312
(515) 288-4823